



## Pacific Wireless

693 E. Draper Heights Way Suite 210  
Draper, UT 84020  
TEL (801) 572-3024  
FAX (801) 572-3025  
www.pacwireless.com

# PAWDCA-24

## DATA SHEET

### Directional Antenna System

### 1700 to 2700 MHz Operation

#### Features

- Small Size/Reduced Shipping Cost
- 50 Ω Passive Feed Dipole
- Integrated Type N Female Connector or 24” pigtail with N Male or N Female Connector
- Horizontal or Vertical Polarity
- 24 dBi Antenna Gain
- Rugged, Lightweight and Waterproof
- Heavy Duty Adjustable Tilt Bracket
- Powder Coat Painted Die Cast Aluminum



24dBi Antenna System

#### Applications

- 2.4 GHz ISM Band Applications
- Point to Point Repeaters
- Wireless Local Loop
- Point to Multipoint Receive Sites
- Wireless Internet Access
- Streaming Video
- Wireless Bridges
- MMDS Applications

#### Description

The PAWDCA-24 is a directional antenna system offered by Pacific Wireless, which incorporates a 2-piece aluminum die cast parabolic grid type antenna reflector with the PMPF, patented 50-ohm passive feed dipole. Dipoles come in 2 basic configurations, PMPF-xx with integral N type Female connector and PMPF-xxP with 24” pigtail equipped with an N type Male connector or PMPF-xxPF with an N type Female Connector. The antenna reflector and PMPF dipole can be bought separately for maximum system flexibility. Installation is simple with the Pacific Wireless adjustable tilt “Heavy Duty” bracket that comes standard. The bracket accommodates poles from 1” up to 2.5” OD. Brackets are full galvanized for extreme corrosion protection and each reflector comes complete with stainless steel hardware and complete assembly instructions.

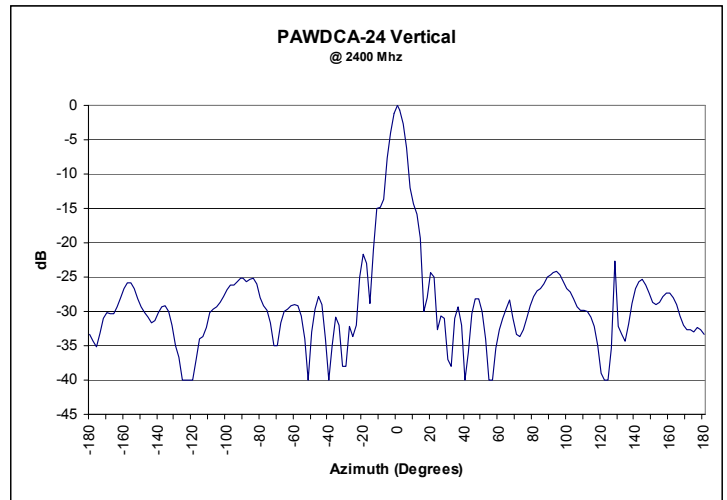
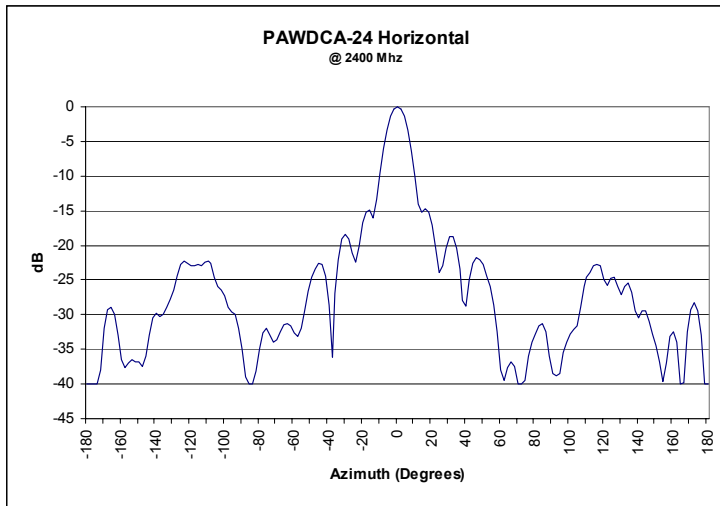
#### Specifications

Parameter	Model	Min	Typ	Max	Units
<i>Frequency Range</i>	PMPF-1 PMPF-2 PMPF-19 PMPF-18 PMPF-18S	2300 2500 1880 1750 1700		2500 2685 1930 1850 1850	MHz
<i>Input Return Loss (S<sub>11</sub>)</i>			-12		dB
<i>VSWR</i>			1.5:1		
<i>Impedance</i>			50		OHM
<i>Input Power</i>			50		W
<i>Pole Diameter (OD)</i>		1 25		2.5 60	inch mm
<i>Operating Temperature</i>		-45		+70	Deg C

\*Note: Pacific Wireless does not supply the mounting pole or coax cable. Antenna system assembly is required.

<b>Gain</b>	24 dB
<b>3dB Beam Angle</b>	8 deg
<b>Cross Pole</b>	26 dB
<b>Front to Back</b>	> 24 dB
<b>Side Lobe</b>	-20 dB
<b>Wind Loading</b>	
100MPH	96 Lbs
140MPH	188 Lbs
100MPH: ½" Radial Ice	176 Lbs
<b>Weight</b>	5.5 Lbs
<b>Dimension (LxW)</b>	42" x 24"
<b>Focal Length</b>	16"

### Integrated Antenna Patterns



**Note:** Above are typical azimuth plots using PMPF-1 Dipole

### The System . . .

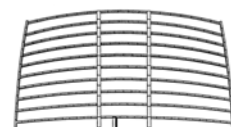
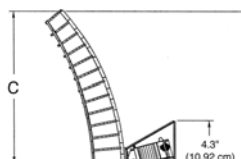
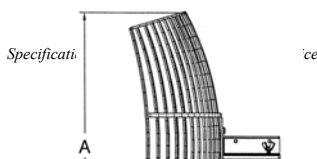
Patented PMPF-xx Passive Feed Dipole:	PAWDCA24 Antenna Reflector:
<ul style="list-style-type: none"> <li>• Integrated Type N Female Connector or 24" Pigtail with N Male or N Female Connector</li> <li>• Waterproof Sealed UV Plastic Housing</li> <li>• Easily installs onto any PMANT/PAWDCA-xx</li> </ul>	<ul style="list-style-type: none"> <li>• 24 dBi Gain</li> <li>• Die Cast Aluminum</li> <li>• Powder Coat Epoxy Painted Finish (Color: light gray)</li> </ul>

### Standard Packaging:

Model	Units per box	L x W x H	Weight	Dimensional Weight <small>(For Air Freight Calculations)</small>
PAWDCA-24	5 Pack	25 x 22 x 9	45Lbs.	45Lbs.

### Mechanical Specifications

Antenna Reflector: Die Cast Aluminum



Rev 6 04/26/02

**Top View**

**Side View**

**Rear View**

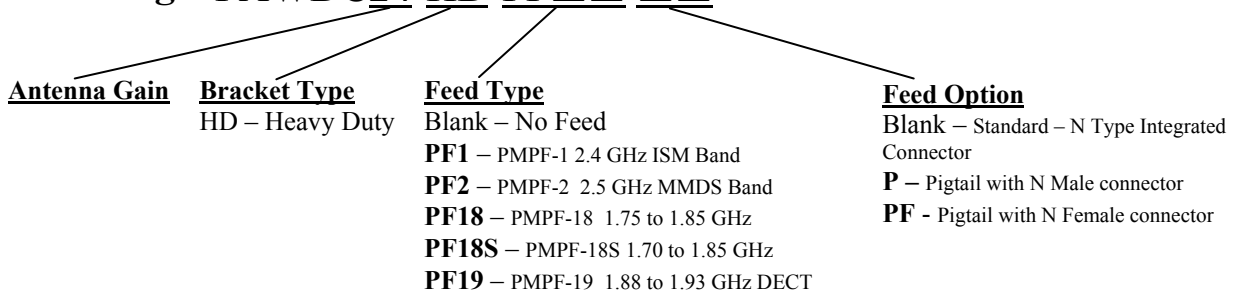
	A		B		C		D		E	
	in.	cm.	in.	cm.	in.	cm.	in.	cm.	in.	cm.
<b>PAWDCA-24</b>	24	60.96	13	33.02	19.5	49.53	42	106.7	16	40.64

<b>Approximate Installed Weight</b>
<ul style="list-style-type: none"> <li>Including PMPF Dipole PAWDCA-24 8.4 lbs.</li> </ul>

**Notes:**

- Antenna is a 2-piece design requiring assembly.
- Mounting brackets are disassembled from the antenna reflector so the reflectors stack compactly, which saves volume in both shipping and warehouse storage.
- A complete antenna system includes one PMPF-xx, one antenna reflector assembly and bracket with all necessary hardware for pole mounting.
- All shipments F.O.B. Pacific Wireless Midwest Warehouse in Portage, Michigan 49002
- All antennas carry a 2 Year Warranty

**System Ordering: PAWDC24-HD-PF□□ □□**



**For further information contact:**



**Pacific Wireless**  
 693 E. Draper Heights Way Suite 210  
 Draper, UT 84020  
 TEL (801) 572-3024  
 FAX (801) 572-3025  
 www.pacwireless.com